

# Predatory Lending in Lake Charles

Number of Payday Lenders: 30

Population Below Poverty Level: 22%

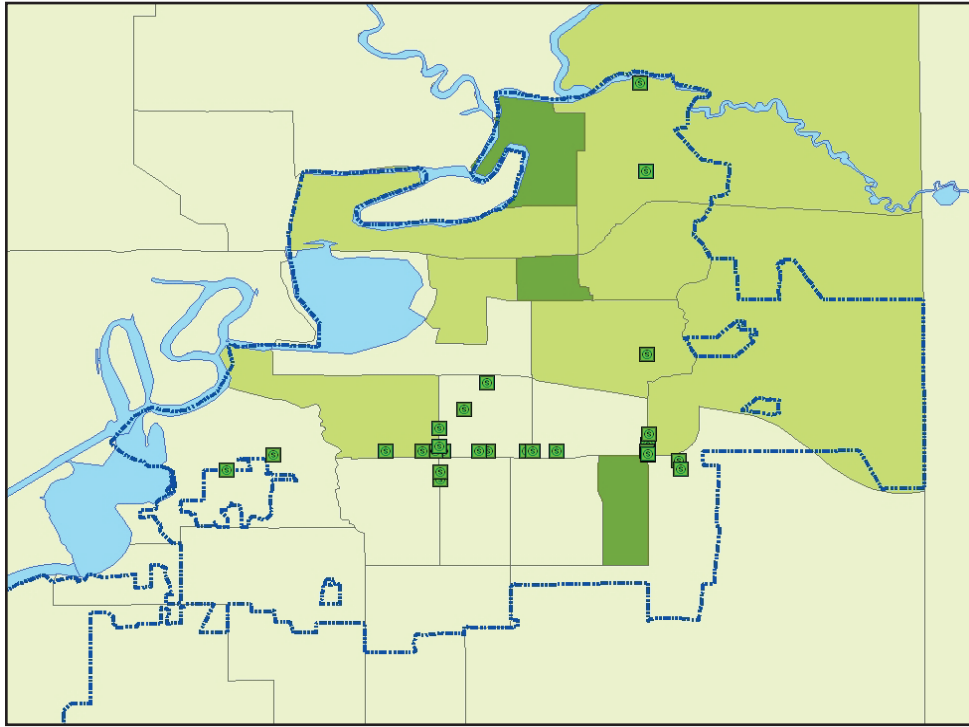
Population per Payday Loan Storefront: 2,385

Percent of African-Americans Below Poverty Level: 32%

Number of Banks or Credit Unions: 35

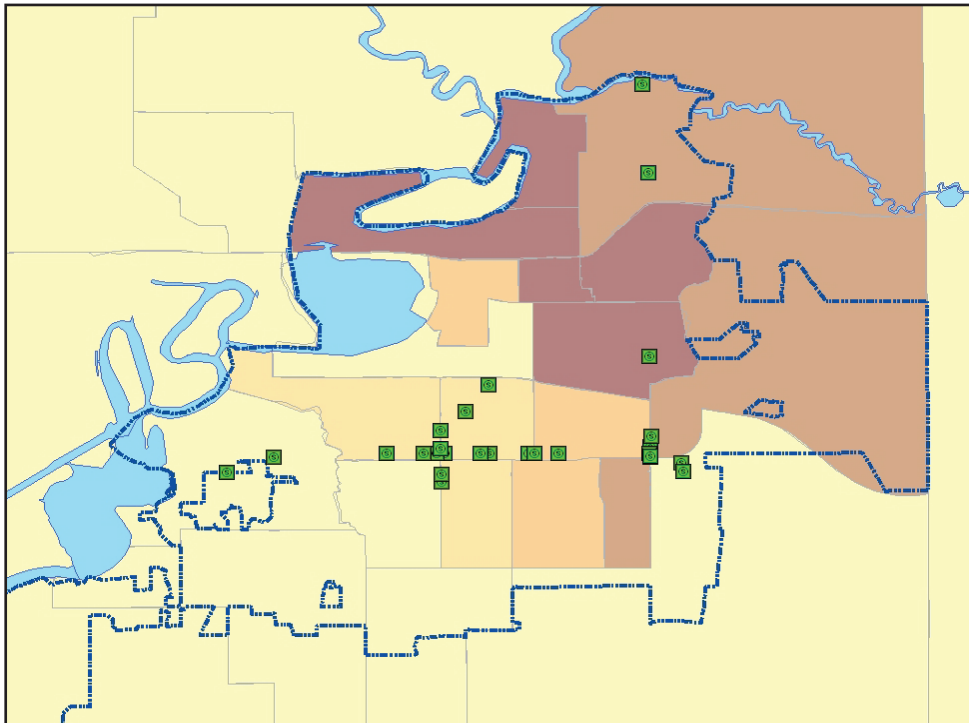
Percent of Caucasians Below Poverty Level: 12%

## Payday Loan Locations and Poverty Rate



< 20%      20 - 30%      > 30%      City Limits      Payday loan location

## Payday Loan Locations and African-American Population



< 20%      20 - 40%      40 - 60%      60 - 80%      80 - 100%      City Limits      Payday loan location