

# Predatory Lending in Lafayette

Number of Payday Lenders: 39

Population Below Poverty Level: 18%

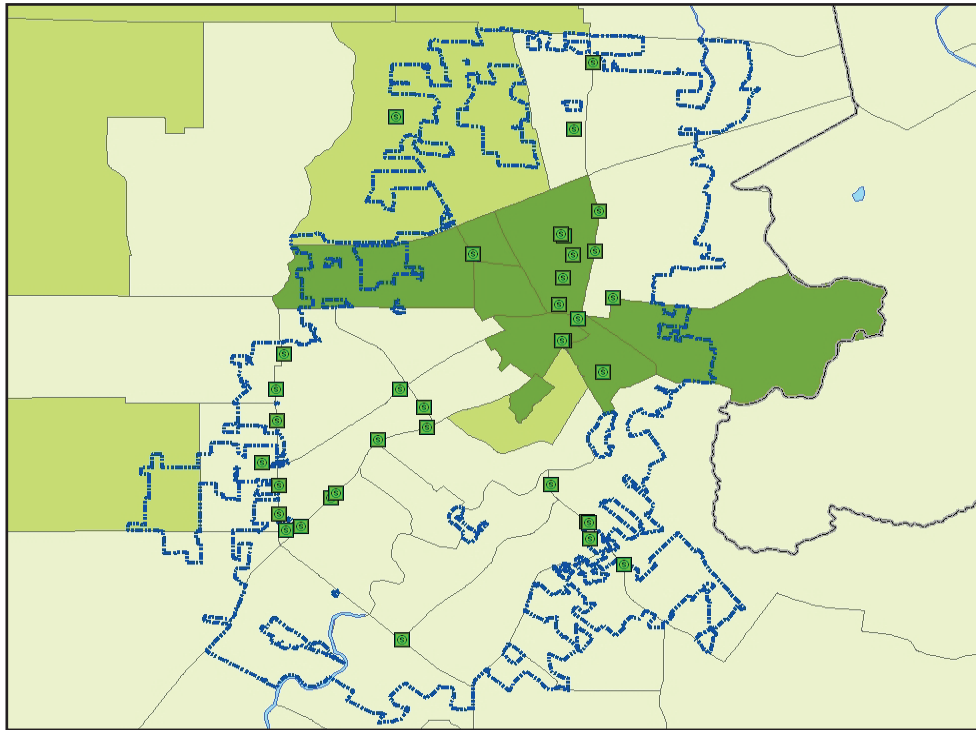
Population per Payday Loan Storefront: 2,497

Percent of African-Americans Below Poverty Level: 32%

Number of Banks or Credit Unions: 62

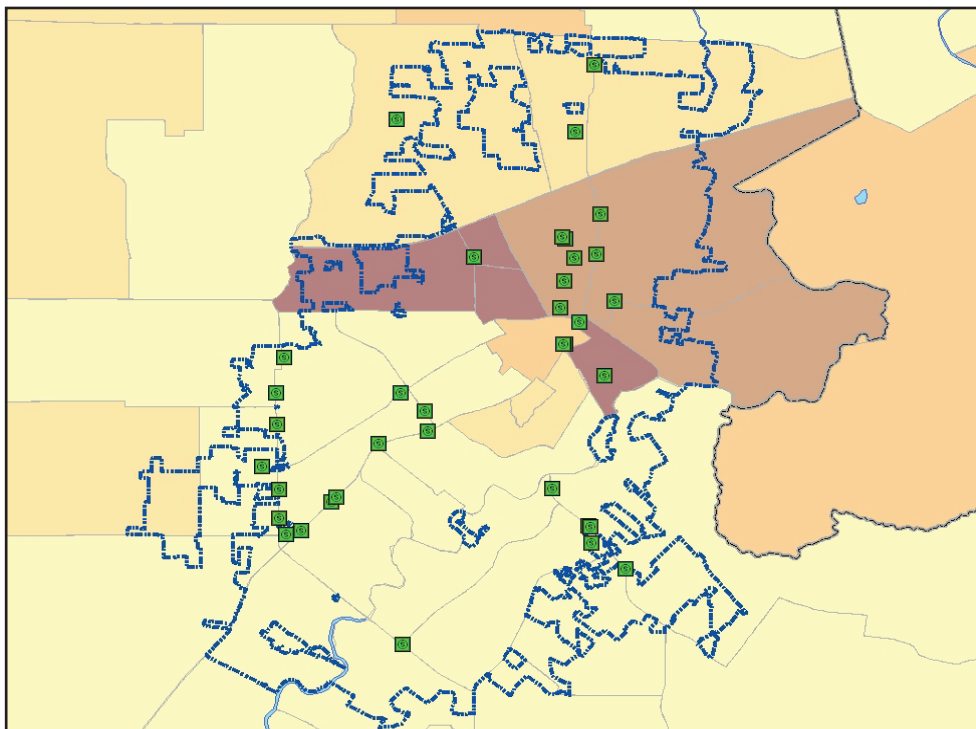
Percent of Caucasians Below Poverty Level: 11%

### Payday Loan Locations and Poverty Rate



< 20%      20 - 30%      > 30%      City Limits      Payday loan location

### Payday Loan Locations and African-American Population



< 20%      20 - 40%      40 - 60%      60 - 80%      80 - 100%      City Limits      Payday loan location