

# Predatory Lending in Baton Rouge

Number of Payday Lenders: 85

Population Below Poverty Level: 20%

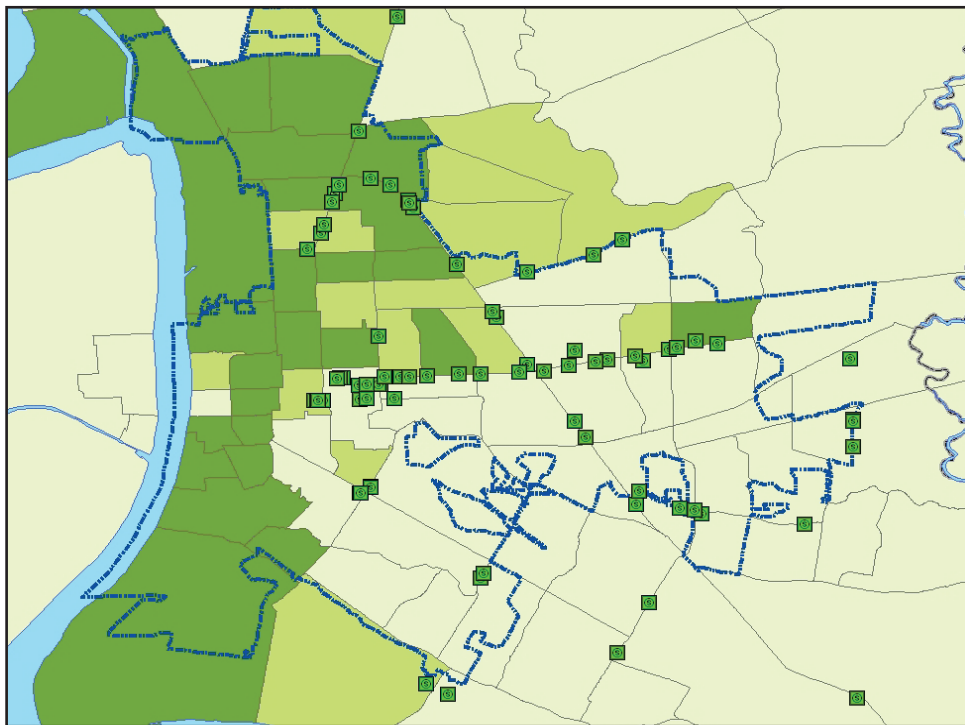
Population per Payday Loan Storefront: 2,652

Percent of African-Americans Below Poverty Level: 28%

Number of Banks or Credit Unions: 126

Percent of Caucasians Below Poverty Level: 12%

## Payday Loan Locations and Poverty Rate



< 20%

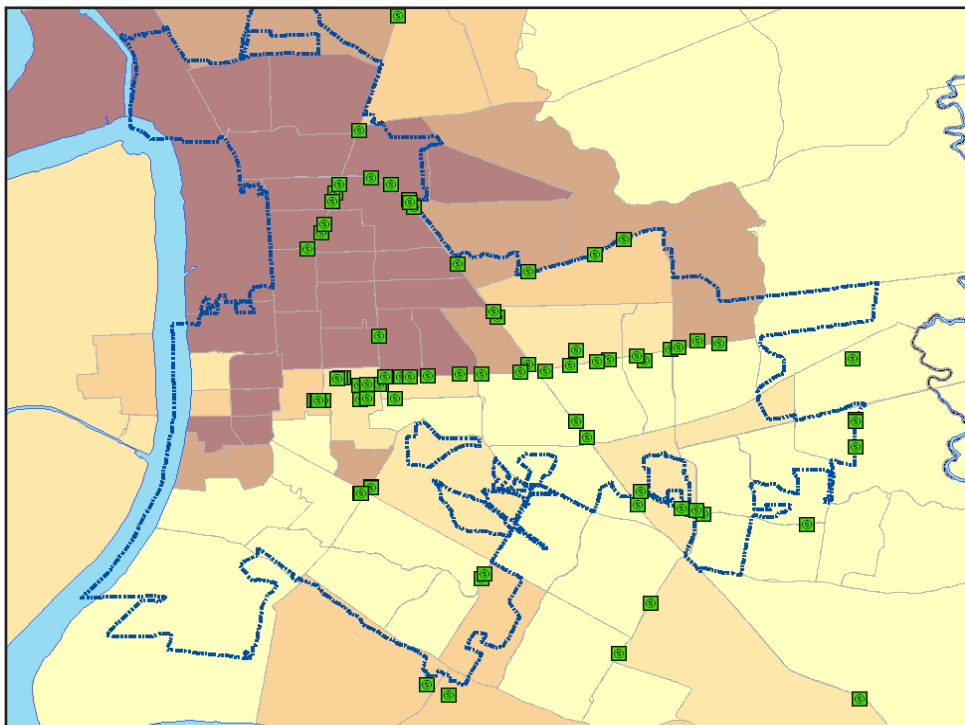
20 - 30%

> 30%

City Limits

Payday loan location

## Payday Loan Locations and African-American Population



< 20%

20 - 40%

40 - 60%

60 - 80%

80 - 100%

City Limits

Payday loan location