

Predatory Lending in Alexandria

Number of Payday Lenders: 29

Population Below Poverty Level: 24%

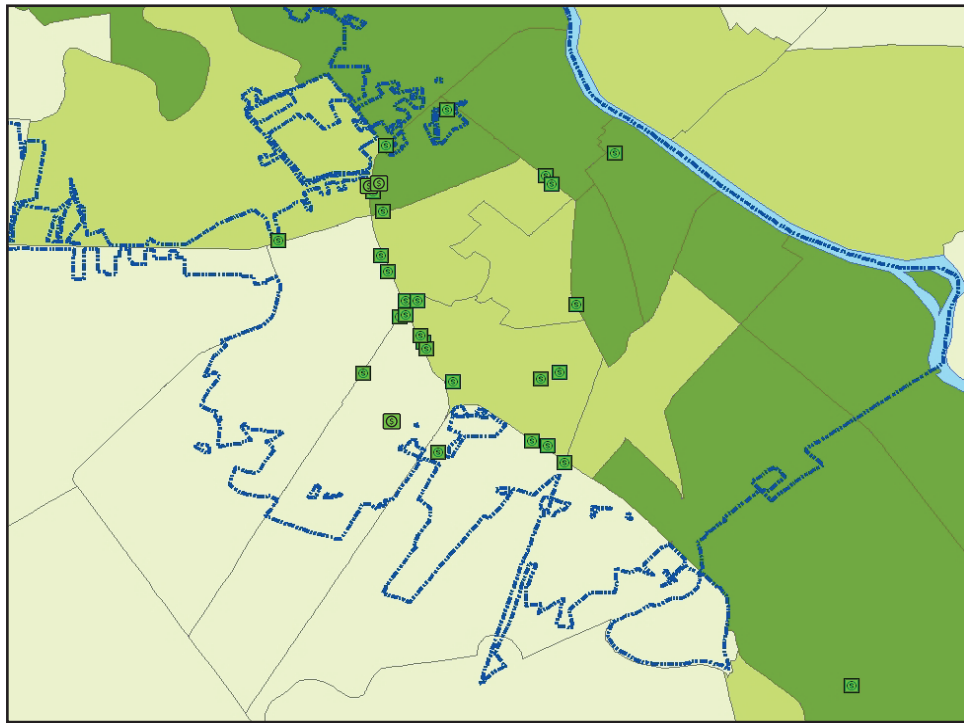
Population per Payday Loan Storefront: 1,684

Percent of African-Americans Below Poverty Level: 33%

Number of Banks or Credit Unions: 31

Percent of Caucasians Below Poverty Level: 11%

Payday Loan Locations and Poverty Rate



< 20%

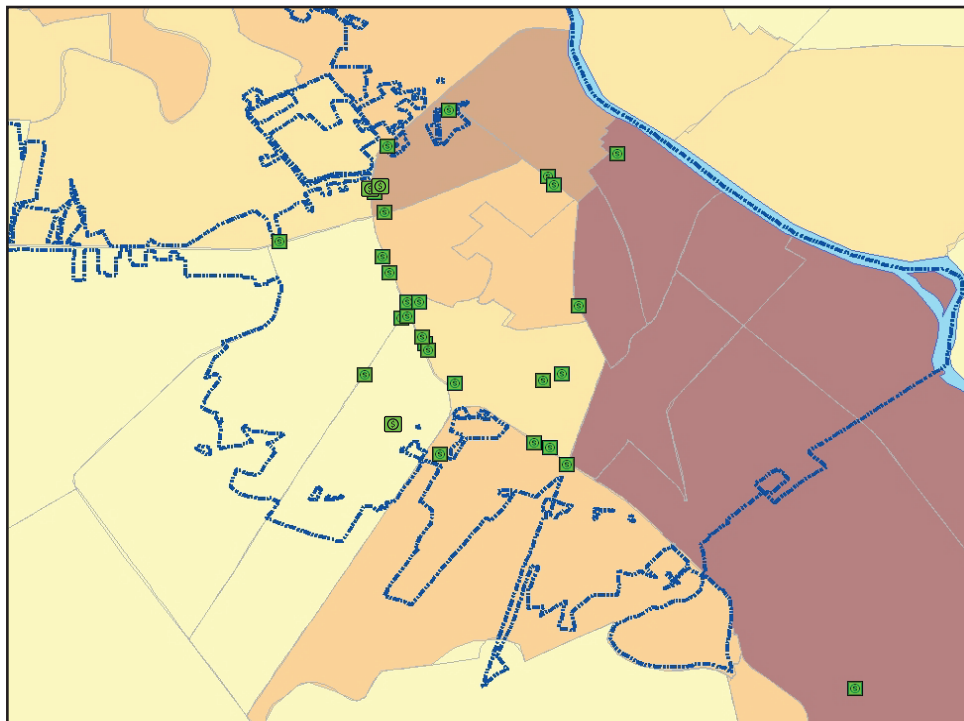
20 - 30%

> 30%

City Limits

Payday loan location

Payday Loan Locations and African-American Population



< 20%

20 - 40%

40 - 60%

60 - 80%

80 - 100%

City Limits

Payday loan location